

PART OF EAST 1/2 OF SECTION 16 T.6N., R.1W., S.L.B. & M.

35

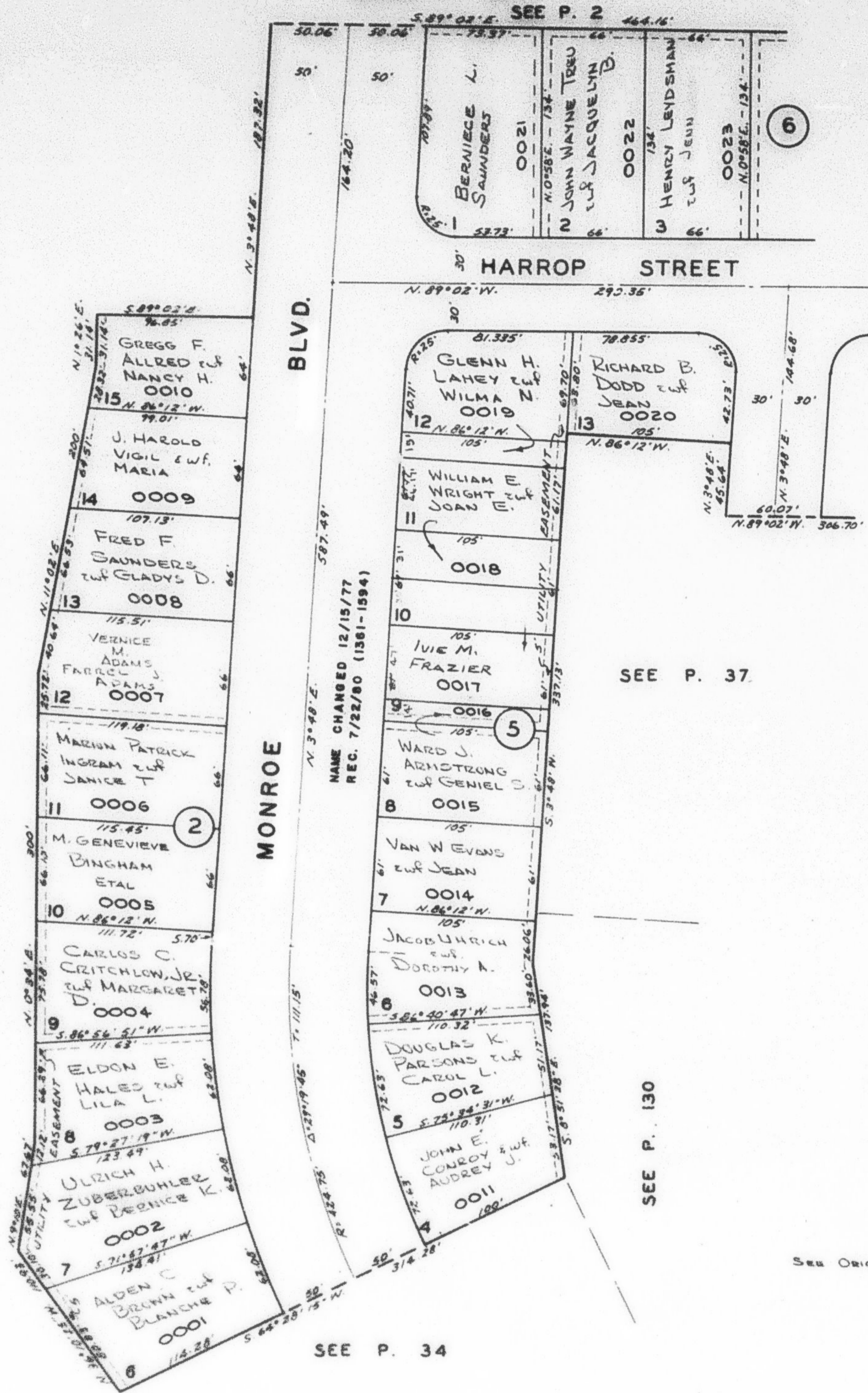
NORTH PARK NO. 2

IN OGDEN CITY
PART OF BLOCKS 2, 5 & 6
SCALE 1" = 80'

TAXING UNIT: 25

PREFIX: 12-035

SEE P. 31



SEE P. 34

SEE P. 37

SEE P. 130

SEE P. 36

SEE ORIGINAL PLAT IN BOOK 12, PAGE 14